

## PROJECT #1

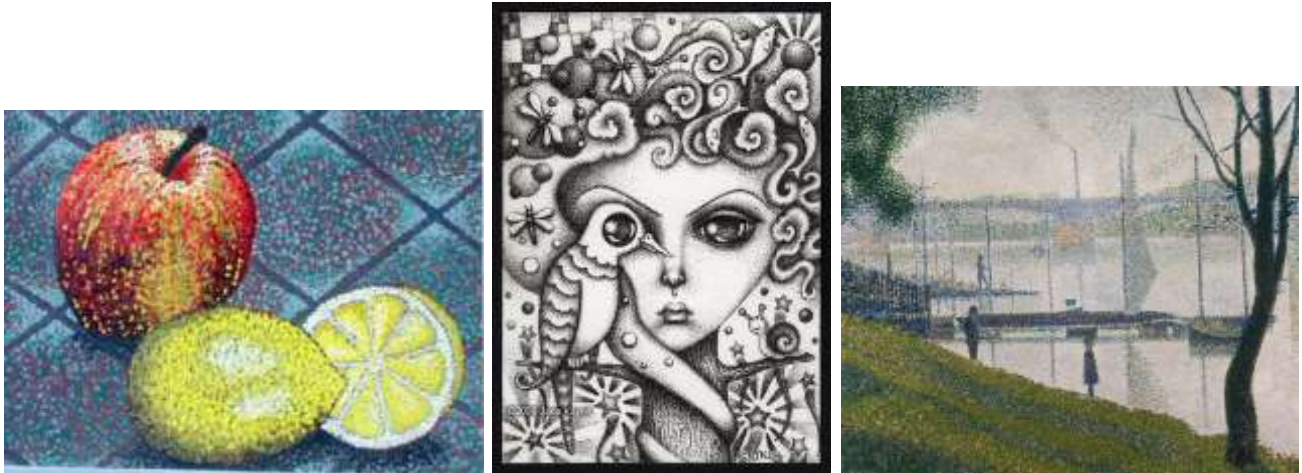
### CREATING ART WITH POINTS

Point is the fundamental to all other design elements and can be used independently in design.

Research and select a painting that you would like to recreate with dots.

Your selected art work could be black and white or in color, your choice. The size of your paper must be a minimum of 8" x 10". Use dots made by a felt tipped or ball point pen, color pencils, or color sharpies. Show solidity by varying the size of the dots and their closeness to each other.

### Examples



### Materials:

Your choice! (Felt tipped or ball point pen, color pencils, or color sharpies)

Black or white Paper

Black or white graphite paper

**Step 1-** Make a copy of your selected painting. The printed copy should be the same size as the surface that you will be working on.

**Step 2-** Using the graphite paper; lightly transfer the outlines of the art work.

**Step 3-** Use your pen, color pencils, or color sharpies to recreate the art work. You must only use dots.

**Step 4-** Matt or mount you art work.

**Step 5-** Label: your name, THEA 2400 DESIGN AESTHETICS, project's name.

### Grading:

Presentation quality

Selecting a challenging art work

Execution and accuracy